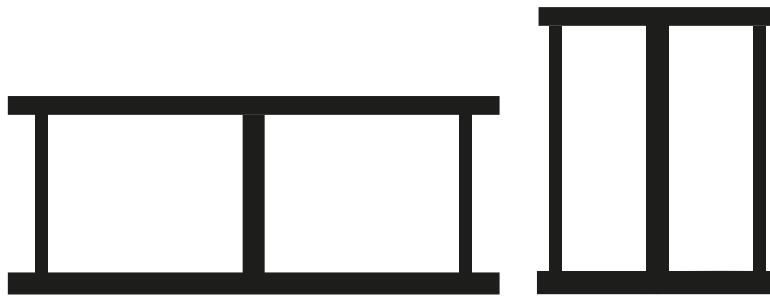


# ZERO

by Giopato&Coombes



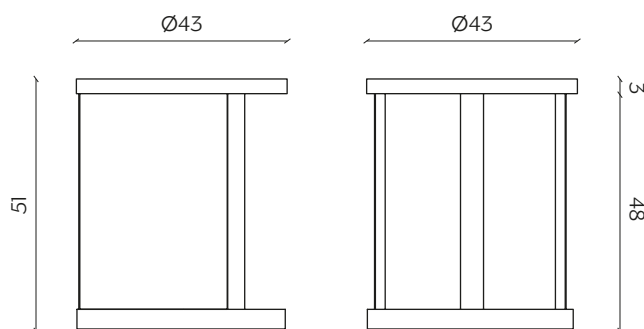
Zero si avvicina alla filosofia orientale con il contrasto tra forme piene e vuote, catturando la magia del Sol Levante in un piano. La struttura è realizzata in lamiera d'acciaio laccata, il piano in vetro extrachiaro, noce canaletto o rovere termotrattato.

Zero approaches Eastern philosophy with the contrast between full and empty shapes, capturing the magic of the Japanese Rising Sun with a table top. The structure is made of lacquered steel sheet, the top in extra-clear glass, Canaletto walnut, or thermo-treated oak.

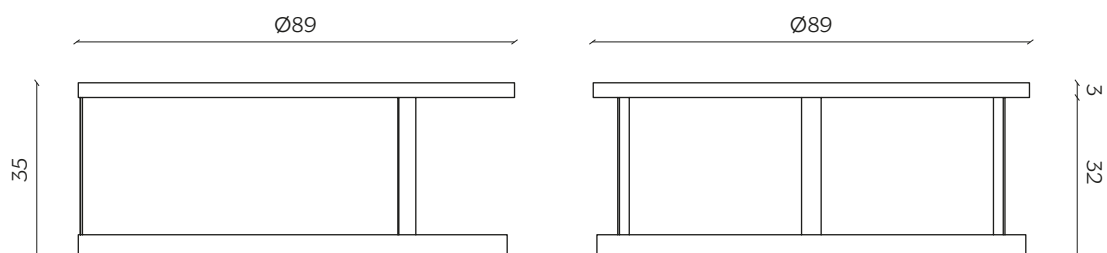
## DIMENSIONI | DIMENSIONS



lunghezza | width: 43 cm  
larghezza | depth: 43 cm  
altezza | height: 51 cm



lunghezza | width: 89 cm  
larghezza | depth: 89 cm  
altezza | height: 35 cm



## AMBIENTE | ENVIRONMENT

interno | indoor

## DOWNLOAD | DOWNLOADS

la guida Cura e Manutenzione è disponibile su [miniforms.com](http://miniforms.com)  
Care and Maintenance guide is available at [miniforms.com](http://miniforms.com)

file 2D, 3D e fotografie sono disponibili su [miniforms.com](http://miniforms.com)  
2D, 3D files and hi-res images are available at [miniforms.com](http://miniforms.com)

## FINITURE | FINISHES

### LEGNO | WOOD

#### Piano | Top



Rovere Fiammato  
Flamed Oak



Frassino Nero  
Black Ash



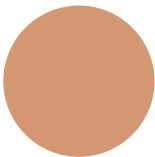
Rovere Termotrattato  
Heat-treated Oak



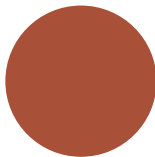
Noce Canaletto  
Canaletto Walnut

#### GAMBE | LEGS

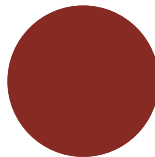
#### Laccato | Lacquer



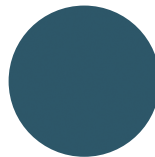
Albicocca  
NCS: S2030-Y40R



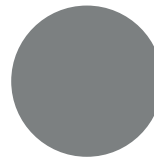
Pompei  
NCS 4550-Y70R



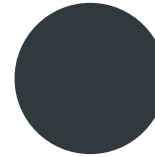
Bloody Mary  
NCS 4550-Y80R



Bisanzio  
NCS 6030-B



Grigio Polvere  
RAL: 7037



Antracite  
RAL: 7016



Nero  
RAL: 9005



Bianco  
RAL: 9016



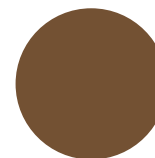
Canapa  
NCS: 1502-Y



Grigio Seta  
RAL: 7044



New Juta  
NCS: 3010-Y30R



Visone  
NCS: 6010-Y60R

#### Metallo | Metal



Oro Rosa Opaco  
Rose Gold Matt



Bronzo  
Bronze