



# GHOST TABLE

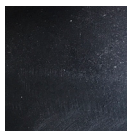
by Kristian Sofus Hansen & Tommy Hyldahl

Ghost Coffee Table is a solid table in cast aluminium. The elegant table is casted with three pointed legs and a table top with a groove in the outline, which beautifully highlights the qualities of the material.

The table is taken directly from the mould without polishing, which gives it a unique rough surface with texture of the mould. The raw aluminium table is powder coated and afterwards handpainted, which gives it a beautiful and diverse surface, with alternation between a matte and a reflective finish.

NORR11

## GHOST TABLE



Raw Black

## MATERIALS

Aluminium. Powdercoated and afterwards handpainted

## CARE INSTRUCTIONS

Follow instructions on [partner.norr11.com](http://partner.norr11.com)

## ORIGIN

Asia

## DIMENSIONS

Height: 40 cm  
Diameter: 50 cm

