

## **SLOPE**

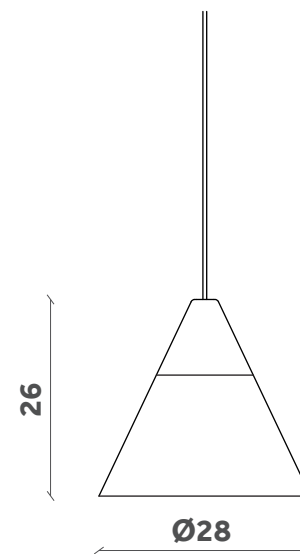
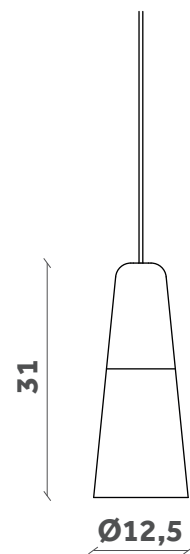
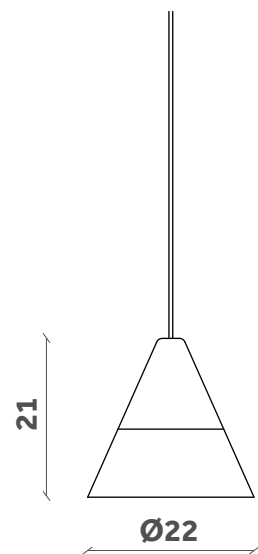
Lampada/Lamp

Design Skrivo

**LS 30**

**LS 31**

**LS 32**



## FINITURE / FINISHES

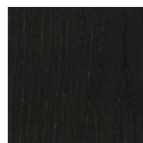
---

### Struttura Structure

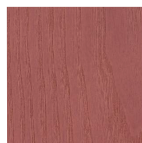
#### Legno / Wood



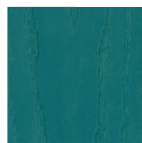
Beech



Black Aniline



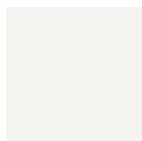
Marsala Red  
Aniline



Veronese Green  
Aniline

### Cono Cone

#### Ceramica / Ceramic



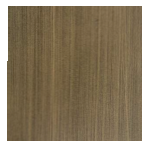
White  
Ral: 9016



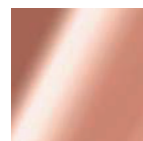
Apricot  
NCS S2030  
Y40R



Silk Gray  
Ral: 7044



Bronzè



Copper

## DETTAGLI TECNICI / TECHNICAL DETAILS

---



**Lunghezza standard cavo 1,80m**  
*Standard cable length 1,80m*