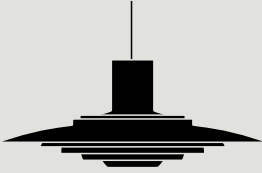


Instructions



P376 KF2 Kastholm & Fabricius 1963

Congratulations with your new P376 lamp, designed in 1963 by Kastholm & Fabricius. We hope you will enjoy using this lamp and follow these instructions to ensure correct installation. If you have any questions or comments, please do not hesitate to contact us by mail on:

info@andtradition.com

P376 KF2 Kastholm & Fabricius 1963

Please read these instructions carefully and retain them for future reference to ensure that the product is used correctly. For your own safety, please study each step of this instruction manual first. &Tradition is not responsible for any faults or damages caused by not following these instructions correctly. Do not modify this product in any way.

Contents

- A Lamp shade
- B Lamp holder unit with cable
- C Canopy with metal ceiling bracket and connection box
- D Connection box

Tools needed

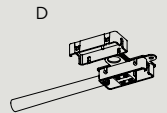
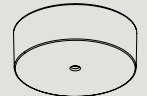
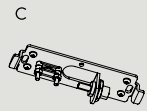
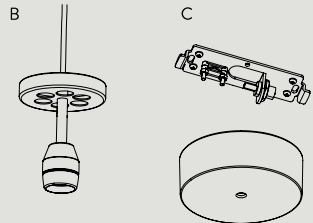
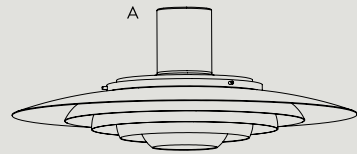
- Bulb type E27
- Small flat-head screwdriver for wiring

Safety precautions

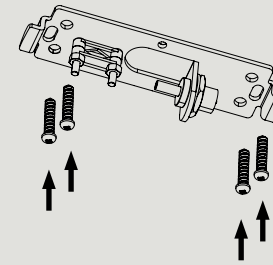
- Dispose of all plastic bags from the packaging and do not allow children to play with it.
- Keep the product well out of children's reach.
- The product is only intended for interior use.
- Consult a professionally qualified electrician if in any doubt.
- Disconnect the electricity supply at the fuse box, before commencing work

Cleaning instructions

- Wipe the surface of the lamp shade with a soft, damp sponge or cloth, and wipe immediately after with a dry cloth.
- Do not use any abrasive cleaning tools such as steel wool, scouring sponges or stiff brushes.
- Never use strong cleaning agents such as white spirit, turpentine, household glass cleaner or cellulose thinners.

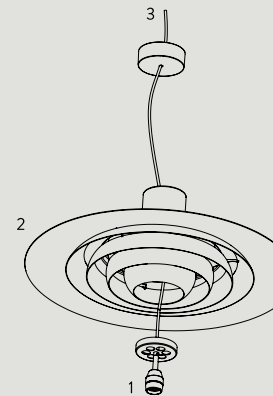


For indoor use only
E27 maximum 150W
Bulb not included



Step 1

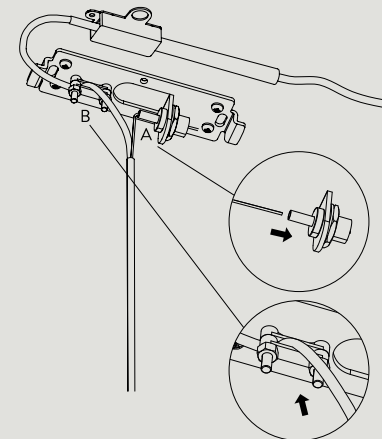
Ensure power supply is turned OFF and remove any existing lamp fitting.
Locate the supply cable and ensure it is ready to be fitted to the connector block.
Mount the metal bracket securely in the ceiling with screws and wall plugs, appropriate for the ceiling of installation.



Step 2

Pull the cable from the lamp holder unit (1) through the lamp shade (2) and the canopy cup (3).

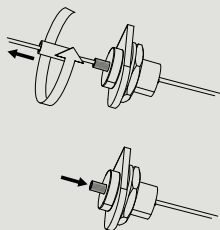
Make sure the lamp holder unit goes all the way to the top inside the shade.



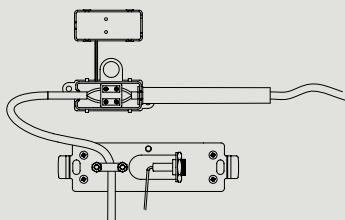
Step 3

Slide the steel safety wire through the strain relief (A) in the metal bracket and pull until you have found the proper height for the lamp. Slide afterwards the cable through the strain relief (B) and tighten.

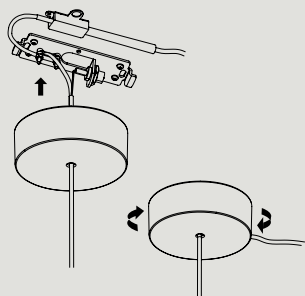
The steel safety wire must always be shorter than the electrical cable during and after installation. The excess wire can be cut after assuring the safety wire is attached.

**Step 4**

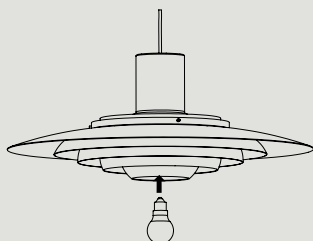
The steel wire can be moved backwards again by unscrewing the metal fitting and pressing in the threading on the fastener.

**Step 5**

Use the terminal block inside the connection box to assemble the wires from the pendant with the wires from the power supply. Close the connection box and place it inside the canopy.

**Step 6**

Place the canopy cup onto the metal bracket and twist to secure it in the right position.

**Step 7**

Install the light bulb.

&Tradition®